



## Ensuring Quality, Speeding Project With Instant Moisture Measurement

WED MAY 05, 2021 - NATIONAL EDITION

DEL WILLIAMS



*Hand-held, durable, instant moisture measurement devices are now available that allow anyone without special training to spot check concrete and mortar at the job site to assure that it is properly mixed, set and dry.*

In the construction industry, the quality of cast-in-place concrete foundations, superstructure, slabs, stairs and architectural features, along with the speed of project completion, can largely depend on getting moisture measurement right — and the same is true with the masonry mortar used to build brick, block or stone walls.

Water is an essential element of both concrete (i.e. water, aggregate, cement) and mortar (i.e. water, aggregate, binding material). However, at the job site, everything from seasonal temperature, rain, humidity and groundwater to circulating air can affect the moisture content in concrete and mortar greatly. This can impact setting and drying time — and incorporating the wrong moisture levels in concrete and mortar can be disastrous to quality, finish, longevity and even safety.

Although the construction industry has access to moisture meters, to some extent, these tools typically

### Related...

Concrete

New Products

require calibration, sampling and time. In addition, they are not always portable or durable enough to be used on job sites.

Fortunately, hand-held, durable, instant moisture measurement devices are now available that allow anyone without special training to spot check concrete and mortar at the job site to assure that it is properly mixed, set and dry. In many cases, such pre-calibrated systems allow non-destructive, non-invasive testing on digital displays with no pin holes or discoloration. This approach facilitates construction work as soon as feasible, speeds project completion and improves quality.

## **How Seasonal Heat and Moisture Can Affect Concrete**

Concrete-water ratios can make a big difference in the permeability of concrete, but air humidity and summer heat also can affect the rate at which moisture migrates through drying concrete.

"High humidity can increase the risk of fractures and other structural issues. Concrete can also gradually change from ductile to brittle when humidity decreases, which naturally occurs when summer heat affects concrete's evaporation time," said John Bogart, managing director of Kett US, a manufacturer of a full range of moisture and organic composition analyzers.

He noted that concrete cures best between 70-80 F, so if temperatures rise above that and climb towards 90 F, concrete can be affected and cause surface problems as well as reduced strength.

Hot weather, wind and dry conditions can increase a concrete slab's rate of evaporation, which can threaten the integrity of the top layer of concrete. Water quickly evaporates from the surface layer, which can cause the mix to be drier and susceptible to surface cracking and shrinkage.

Reduced strength also can become an issue with hot, dry weather, which can shorten the hydration portion of the curing process (when water is absorbed and crystals form in the concrete). Then the concrete mixture has less time to hydrate these forming crystals and create strong compressive strength. So, concrete curing in hot weather can suffer from limited strength and durability.

On the other hand, in wetter seasons, excess moisture can do a great deal of damage to concrete and its protective coatings, as well as affect concrete-water ratios. Because concrete is porous, issues arise when water is trapped within the concrete.

When it comes to structural concrete, including foundational slabs, construction contractors do not want to "guesstimate" moisture levels, which can potentially jeopardize the whole project.

## **The Benefits of Simplified Moisture Measurement**

Although traditional laboratory and online based moisture measurement techniques are useful in the right settings, they have lacked the simplicity and flexibility required for frequent spot checks on construction sites. Because such moisture tests are too slow, laborious, and alter or destroy the sample, they are not practical for the job site, where concrete or mortar must stay in place. Instead, what is needed is a fast, easy method to determine moisture content.

So, industry innovators have developed a simplified approach with testing equipment that allows anyone in the field to get laboratory-quality measurements in any environment.

As an example, using a hand-held device such as the HI520-2 concrete and mortar moisture meter by Kett, the worker would select the calibration (i.e. concrete or mortar), press it against the sample, and moisture is immediately displayed with accuracy of +/-0.5 percent (0-12 percent for concrete/0-15 percent for mortar). Automatic temperature compensation enhances measurement accuracy, and two "raw" modes allow the user to calibrate for deep or shallow samples. Up to 1,000 measurements can be stored in memory and downloaded to a PC for analysis.

The device utilizes high-frequency capacitance, comparing the di-electric constant of the solid with water. A direct relationship exists between this and moisture content.

According to Bogart, one construction contractor used the moisture meter to confirm that the concrete flooring on a 20-story building was ready for custom surface treatment. In fact, the contractor was able

to test the entire project in one morning.

"With an instant moisture meter, flooring installers can test concrete humidity as water passes through the concrete's surface even after it hardens. This kind of testing is critical in indoor installations, where high levels of moisture and trapped water in concrete can create mold or lead to bubbling or degradation of its strength and integrity," said Bogart.

This approach can be particularly helpful to contractors responsible for concrete subflooring.

"If you are building on a slab, you know the importance of a concrete subfloor that is fully dried and accurately prepared for use. Knowing how the concrete will act when the concrete is coated, flooring is installed, or the slab is prepared for final use, is key to success," said Bogart.

For contractors who need more specialized applications of measuring moisture, such as for "wet" concrete, this also is available with other units. For instance, with such units, the sample moisture of slurry and aggregate can be instantly measured, allowing contractors to optimize batch mixing anytime, anywhere.

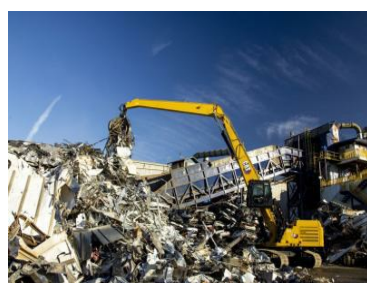
Whether summer, winter, spring, or fall, the bottom line for contractors working with concrete or mortar is that using hand-held devices that provide instant moisture measurement helps to ensure that quality work is done as soon as it is feasible, without excess or insufficient moisture, setting, or drying times. In the end, this facilitates project profitability.

For more information, call 800/438-5388, email [support@kett.com](mailto:support@kett.com) or visit [www.kett.com](http://www.kett.com).

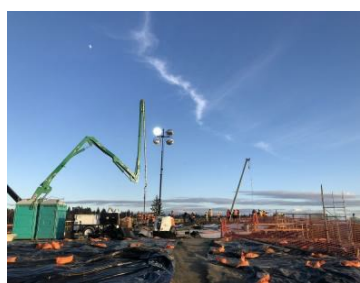
## Today's top stories



**[Metro Overpass Collapses in Mexico City, Leaving Many Dead, Injured](#)**



**[Cat MH3250, MH3260 Material Handlers Set New Standard](#)**



**[VIDEO: SR 167 Completion Project Gaining Momentum](#)**



**[Bobcat Company, Country Artist Justin Moore Announce Partnership, Fan Sweepstakes](#)**



**[John Deere Introduces John Deere Protect Service Plan](#)**



**[ABLE Equipment Rental Announces Appointment of Vice President of Sales Operations](#)**



**[Industry Urges Workers to Get COVID Vaccine](#)**



**[Aspen Equipment Delivers Two Bronto Aerial Platforms](#)**